

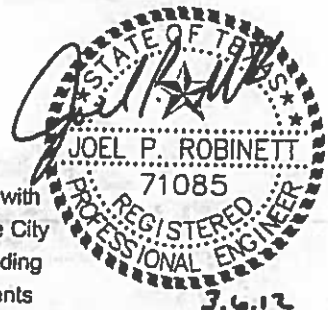
FOR ONE- AND TWO-STORY CONSTRUCTION

TYPICAL MONOLITHIC EXTERIOR FOOTING

S1

SCALE: 3/4" = 1'-0"

BURIED BRICK LEDGE



to be used in compliance with the requirements within the City of Lubbock's Adopted Building Codes & Local Amendments

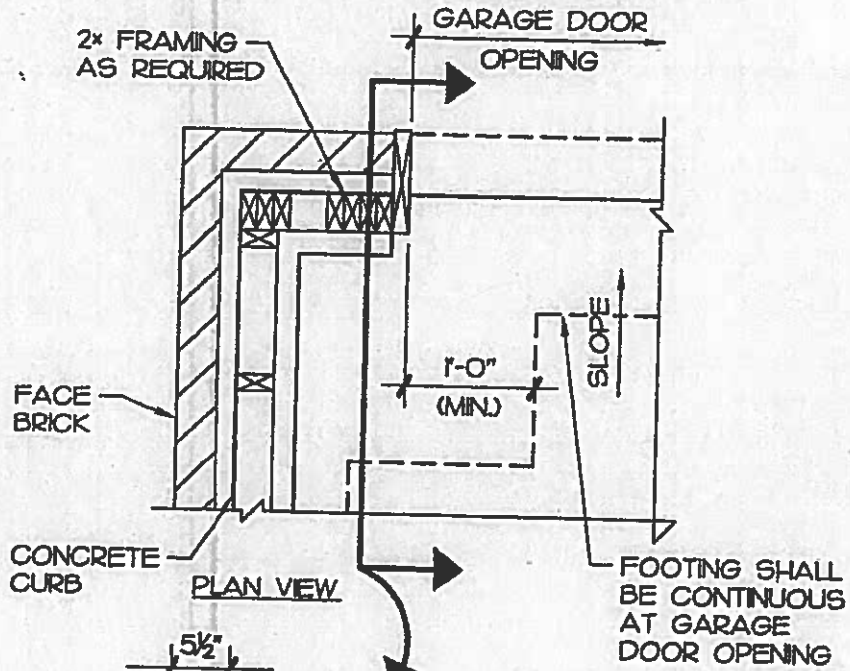
MWM Architects, Inc. F-9245



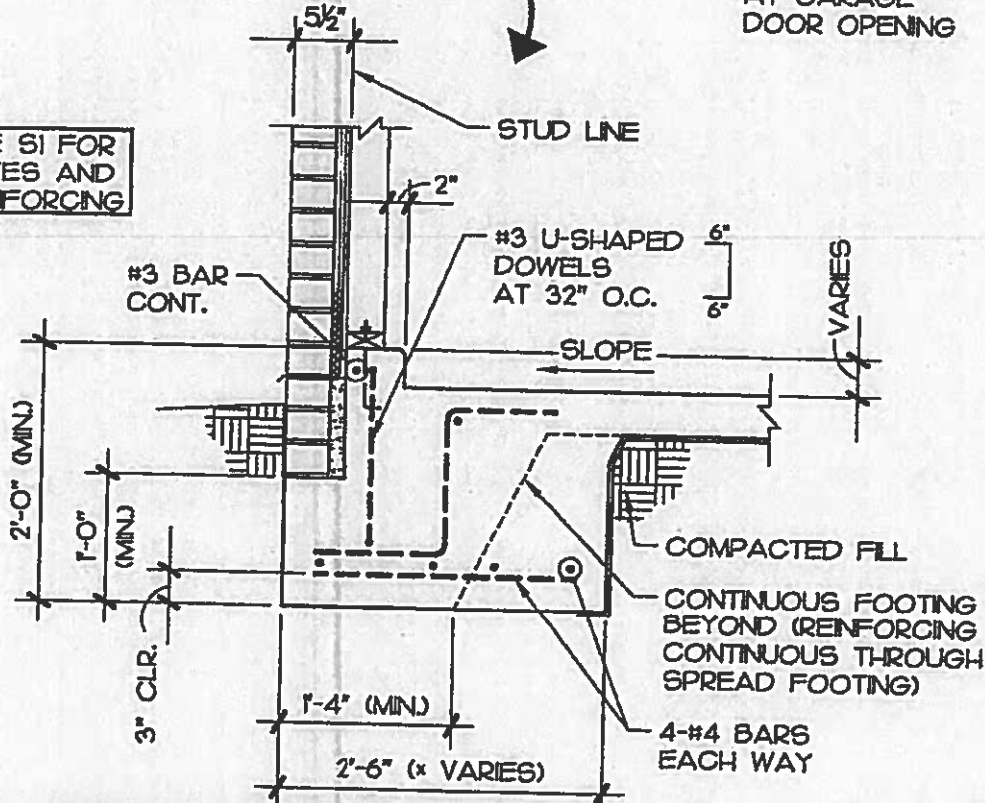
Foundation Details
for the City of Lubbock, TX

Residential Foundation Details

DATE: 3-6-12
SHEET: **S1**
of 8



SEE S1 FOR NOTES AND REINFORCING



to be used in compliance with the requirements within the City of Lubbock's Adopted Building Codes & Local Amendments



SPOT FOOTING AT GARAGE DOOR CORNER

S4

SCALE: 3/4" = 1'-0"

BURIED BRICK LEDGE

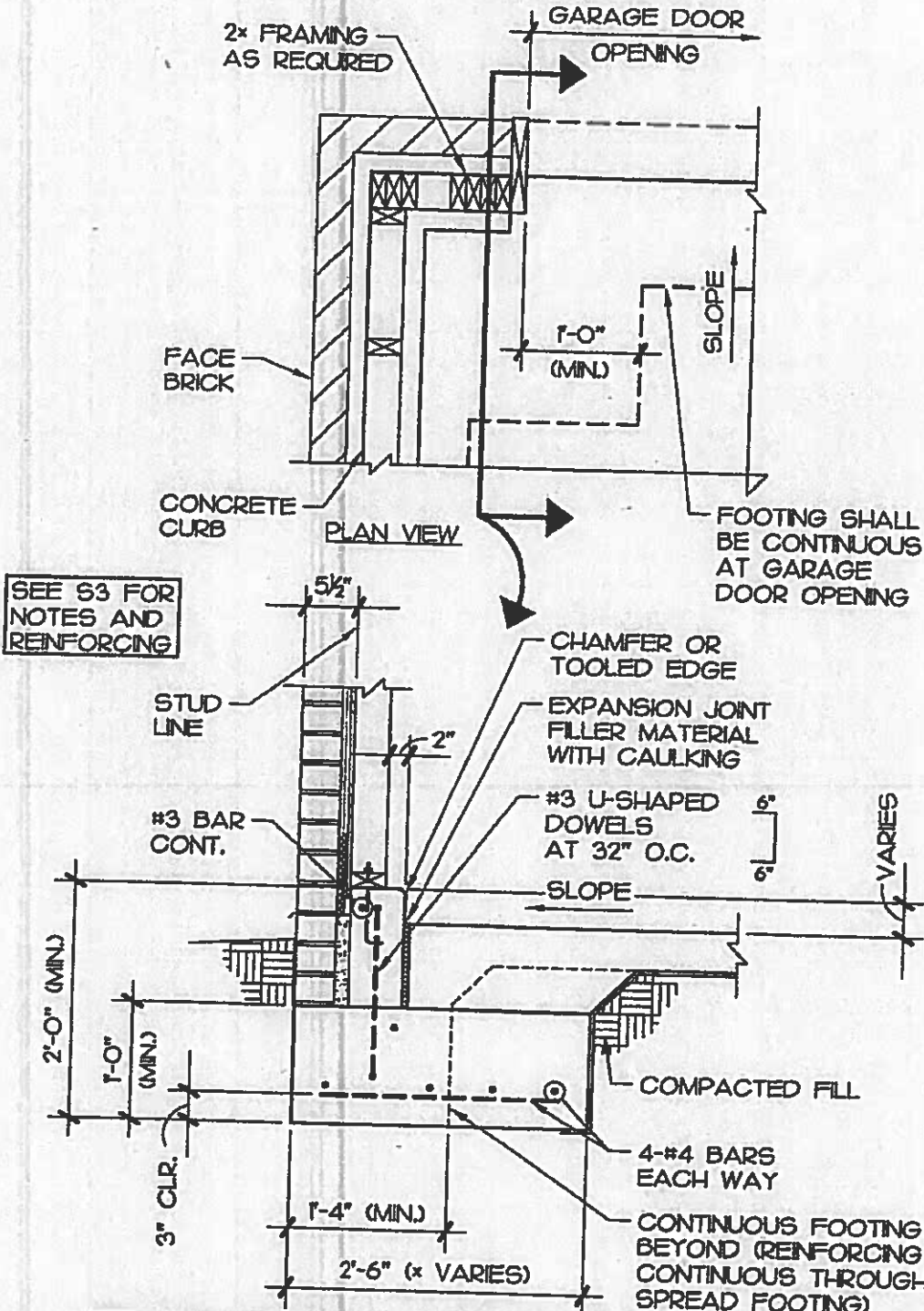
MWM Architects, Inc. F-9245



Foundation Details
for the City of Lubbock, TX

Residential Foundation Details

DATE: 3-8-12
SHEET: **S4**
of 8



SEE S3 FOR NOTES AND REINFORCING

to be used in compliance with the requirements within the City of Lubbock's Adopted Building Codes & Local Amendments



TWO-POUR SPOT FOOTING AT GARAGE DOOR OPENING

S6

SCALE: 3/4" = 1'-0"

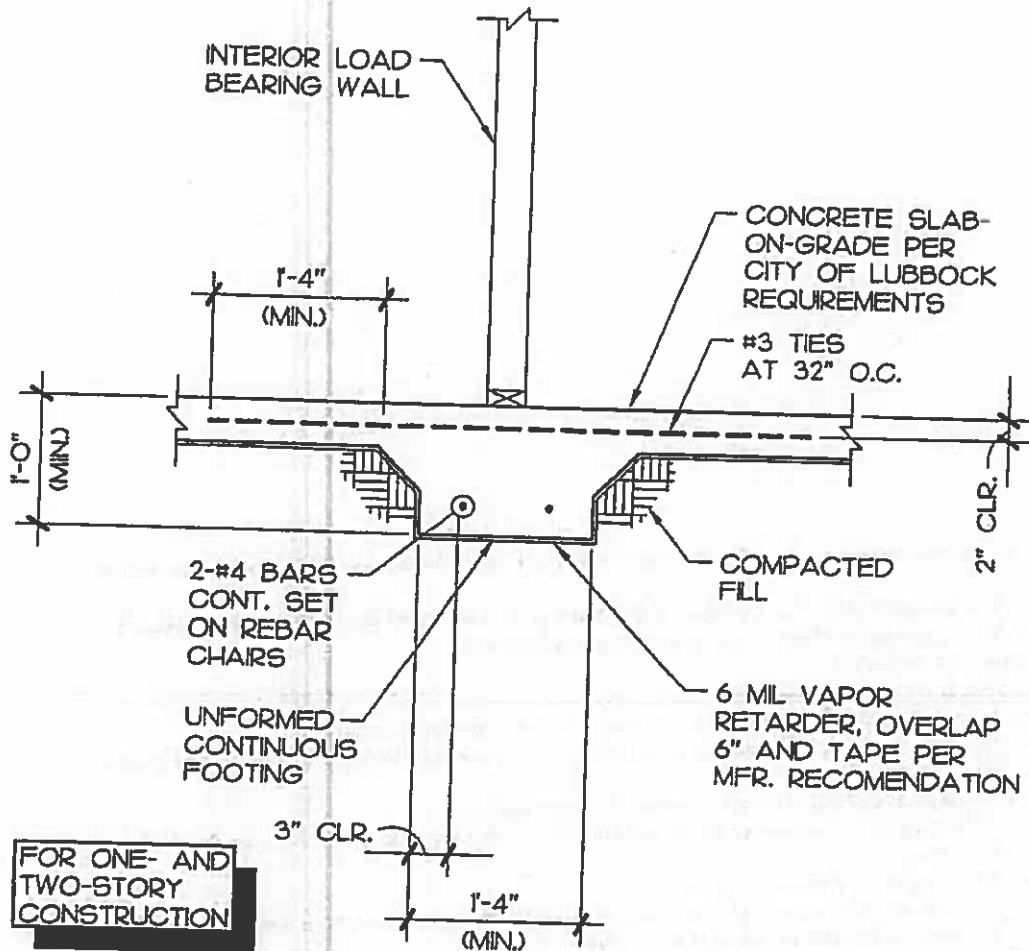
MWM Architects, Inc. F-9245



Foundation Details
for the City of Lubbock, TX

Residential Foundation Details

DATE: 3-8-12
SHEET: **S6**
of 8

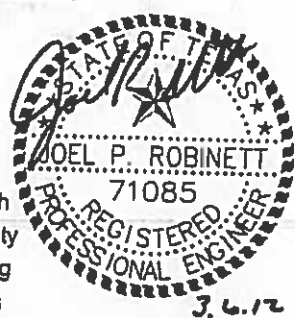


FOR ONE- AND TWO-STORY CONSTRUCTION

S7

CONTINUOUS FOOTING FOR INTERIOR LOAD BEARING WALL

SCALE: 3/4" = 1'-0"



to be used in compliance with the requirements within the City of Lubbock's Adopted Building Codes & Local Amendments

MWM Architects, Inc. F-9245



Foundation Details

for the City of Lubbock, TX

DATE: 3-6-12
SHEET:

Residential Foundation Details

S7

of 8

Following are additional comments to builders as a reminder to consider when selecting foundation details:

1. On lots that require more than two feet of fill at any point, check with the Inspection Department for direction as to needs for Engineered Foundation requirements.
2. Requirement of sand fill
3. Requirement of vapor retarder
4. Requirement of proper fill material and compaction of all trenches in foundation.
5. Consider where concentrated load points will occur and consider additional concrete support at those locations.
6. Adjust footings at zero lot lines not to encroach on adjacent lot.
7. Consider footings and foundations details at basement locations and its impact on main floor foundation above.
8. Note requirements for termite treatment
9. Builder should be knowledgeable about existing natural soils, information from developer or perform test to determine soils information prior to construction on lot.

S8 **ADDITIONAL FOUNDATION NOTES**
NO SCALE



to be used in compliance with the requirements within the City of Lubbock's Adopted Building Codes & Local Amendments

MWM Architects, Inc. F-9245



Foundation Details

for the City of Lubbock, TX

Residential Foundation Details

DATE: 3-8-12
SHEET:

S8

of 8